



DESCRIPTION

The BAT54XV2 is available in SOD-523 Package.

ORDERING INFORMATION

Package Type	Part Number
SOD-523	BAT54XV2
Package	3,000pcs/Reel
AiT provides all RoHS Compliant Products	

FEATURES

- For low current rectification and high speed
- Switching applications
- Extremely small surface mounting type
- Available in SOD-523 Package

PIN DESCRIPTION





ABSOLUTE MAXIMUM RATINGS

$T_A = 25^\circ\text{C}$

V_R , Reverse Voltage	30V
I_O , Mean Rectifying Current	200mA
I_{FSM} , Peak Forward Surge Current (60Hz for Cyc.)	1A
T_J , Junction Temperature	125°C
T_{STG} , Storage Temperature	-40°C ~+125°C

Stresses above may cause permanent damage to the device. These are stress ratings only and functional operation of the device at these or any other conditions beyond those indicated in the Electrical Characteristics are not implied. Exposure to absolute maximum rating conditions for extended periods may affect device reliability.

CHARACTERISTICS

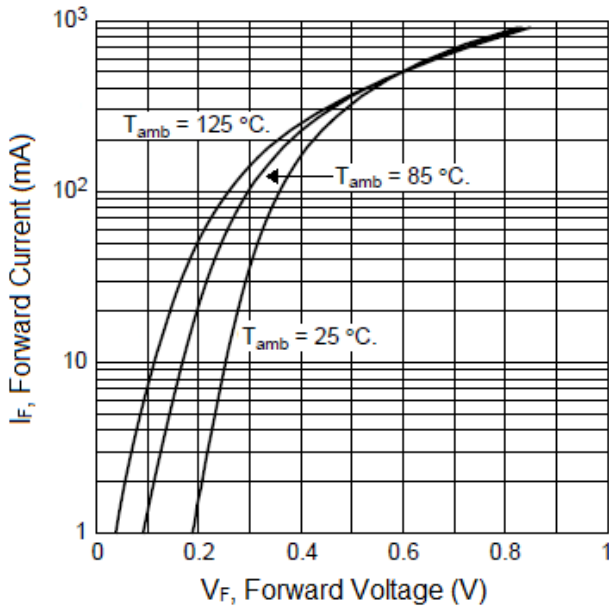
$T_A = 25^\circ\text{C}$

Parameter	Symbol	Conditions	Max	Unit
Forward Voltage	V_F	$I_F=200\text{mA}$	0.5	V
Reverse Current	I_R	$V_R=10\text{V}$	30	μA

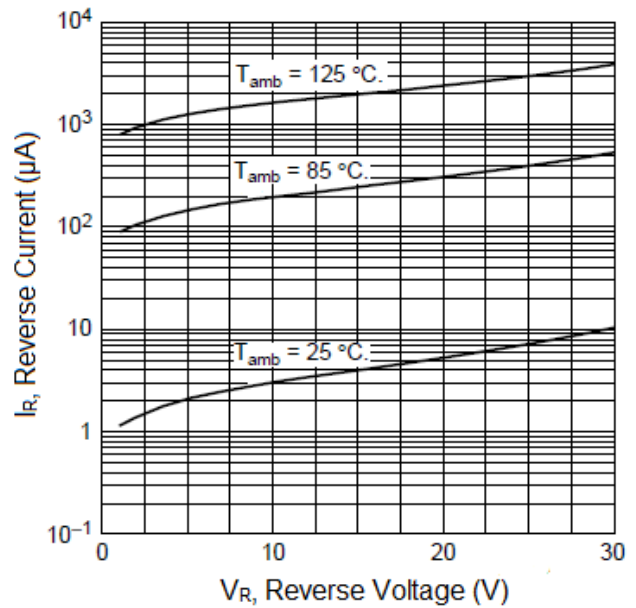


TYPICAL CHARACTERISTICS

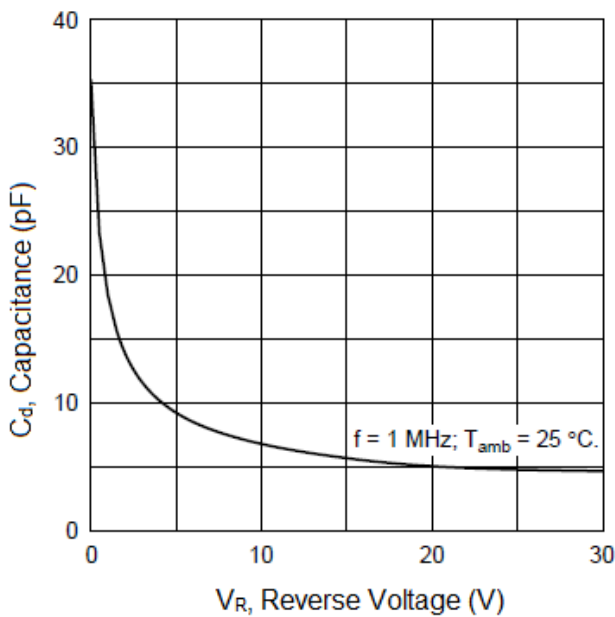
1. Forward current as a function of forward voltage; typical values.



2. Reverse current as a function of reverse voltage; typical values.



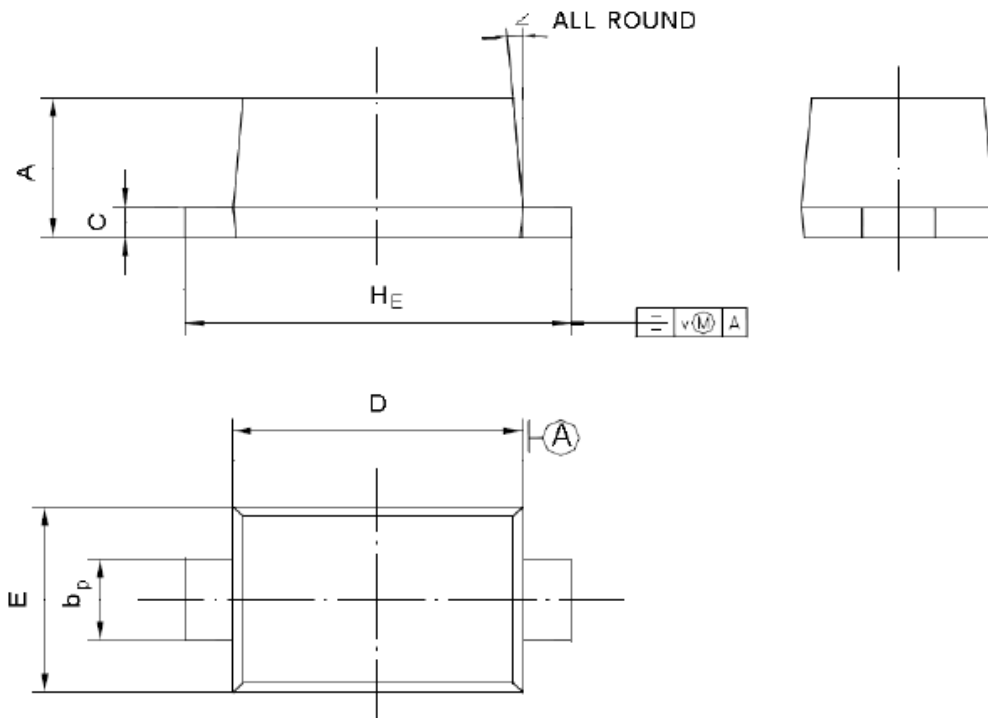
3. Diode capacitance as a function of reverse voltage; typical values.





PACKAGE INFORMATION

Dimension in SOD-523 Package (Unit: mm)
Plastic surface mounted package; 2 leads



Unit	A	b _p	C	D	E	H _E	V	∠
mm	0.70	0.4	0.135	1.25	0.85	1.7	0.1	5°
	0.60	0.3	0.100	1.15	0.75	1.5		



IMPORTANT NOTICE

AiT Components (AiT) reserves the right to make changes to any its product, specifications, to discontinue any integrated circuit product or service without notice, and advises its customers to obtain the latest version of relevant information to verify, before placing orders, that the information being relied on is current.

AiT Components' integrated circuit products are not designed, intended, authorized, or warranted to be suitable for use in life support applications, devices or systems or other critical applications. Use of AiT products in such applications is understood to be fully at the risk of the customer. As used herein may involve potential risks of death, personal injury, or severe property, or environmental damage. In order to minimize risks associated with the customer's applications, the customer should provide adequate design and operating safeguards.

AiT Components assumes no liability to customer product design or application support. AiT warrants the performance of its products of the specifications applicable at the time of sale.