



## DESCRIPTION

The MMBD4148/CA/CC/SE is available in SOT-23 package

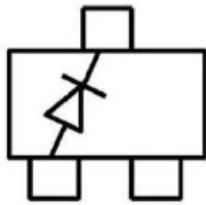
## ORDERING INFORMATION

Package Type	Part Number
SOT-23	MMBD4148
	MMBD4148CA
	MMBD4148CC
	MMBD4148SE
Note	SPQ: 3,000pcs/Reel
AiT provides all RoHS Compliant Products	

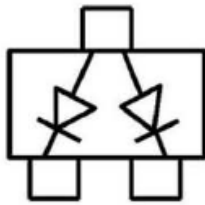
## FEATURES

- Power dissipation  
 $P_D: 350\text{mW}(T_{\text{amb}}=25^\circ\text{C})$
- Forward Current  
 $I_F: 200\text{mA}$
- Reverse Voltage  
 $V_R: 100\text{V}(I_R=100\mu\text{A})$
- Operating and storage junction temperature range  
 $T_J/T_{\text{STG}}: -55^\circ\text{C to } +150^\circ\text{C}$
- Available in SOT-23 package

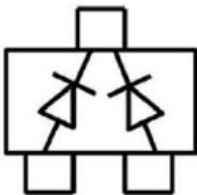
## PIN DESCRIPTION



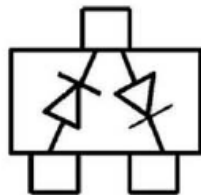
MMBD4148



MMBD4148CA



MMBD4148CC



MMBD4148SE



## ELECTRICAL CHARACTERISTICS

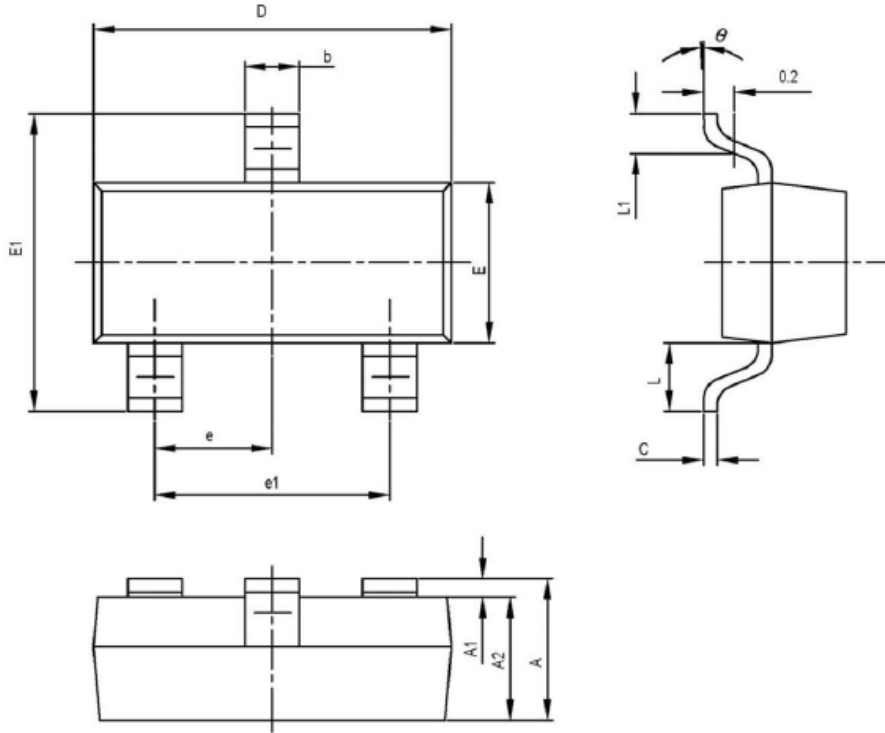
T<sub>amb</sub>=25°C, unless otherwise specified

Parameter	Symbol	Conditions	Min.	Typ.	Max.	Unit
Reverse Breakdown Voltage	V <sub>(BR)</sub>	I <sub>R</sub> =100μA I <sub>R</sub> =5μA	100 75	-	-	V
Reverse Voltage Leakage Current	I <sub>R</sub>	V <sub>R</sub> =25V V <sub>R</sub> =75V	-	-	25 5	nA μA
Forward Voltage	V <sub>F</sub>	I <sub>F</sub> =10mA	-	-	1	V
Diode Capacitance	C <sub>D</sub>	V <sub>R</sub> =0, f=1MHz	-	-	4	pF
Reverse Recovery Time	t <sub>rr</sub>	I <sub>F</sub> =10mA, V <sub>R</sub> =6V I <sub>rr</sub> =1.0mA, R <sub>L</sub> =100Ω	-	-	4	ns



## PACKAGE INFORMATION

Dimension in SOT-23 (Unit: mm)



DIM	MILLIMETERS		INCHES	
	MIN	MAX	MIN	MAX
A	0.900	1.100	0.035	0.043
A1	0.000	0.100	0.000	0.004
A2	0.900	1.000	0.035	0.039
b	0.300	0.500	0.012	0.020
c	0.080	0.150	0.003	0.006
D	2.800	3.000	0.110	0.118
E	1.200	1.400	0.047	0.055
E1	2.250	2.550	0.089	0.100
e	0.950 TYP		0.037 TYP	
e1	1.800	2.000	0.071	0.079
L	0.550 REF		0.022 REF	
L1	0.300	0.500	0.012	0.020
θ	0°	8°	0°	8°



## IMPORTANT NOTICE

AiT Semiconductor Inc. (AiT) reserves the right to make changes to any its product, specifications, to discontinue any integrated circuit product or service without notice, and advises its customers to obtain the latest version of relevant information to verify, before placing orders, that the information being relied on is current.

AiT Semiconductor Inc.'s integrated circuit products are not designed, intended, authorized, or warranted to be suitable for use in life support applications, devices or systems or other critical applications. Use of AiT products in such applications is understood to be fully at the risk of the customer. As used herein may involve potential risks of death, personal injury, or severe property, or environmental damage. In order to minimize risks associated with the customer's applications, the customer should provide adequate design and operating safeguards.

AiT Semiconductor Inc. assumes to no liability to customer product design or application support. AiT warrants the performance of its products of the specifications applicable at the time of sale.